

MOUNTED POINTS

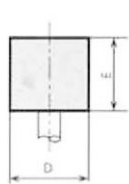
Main features:

- Mounted points for internal cylindrical grinding
- Sizes ranging from 3 to 76 millimetres in diameter
- Manufactured from hundreds of different grains
- Available with vitrified, resin and rubber bonds
- Fullfillment of custom orders

Grinding tool with shaft:

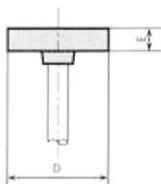
Manufactured sizes: $\varnothing 3-76$

Some products are available on stock



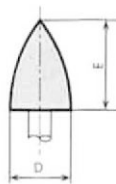
Cylindrical grinding tool
with shaft

MSZ 4522/1-83



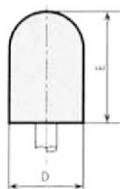
Cylindrical-conical
grinding tool with shaft

MSZ 4522/2-83



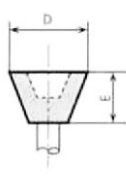
Cambered grinding tool
with shaft

MSZ 4522/3-83



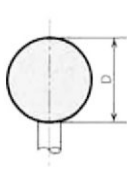
Cylindrical round-ended
grinding tool with shaft

MSZ 4522/4-83



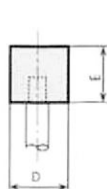
Flaring-Cup grinding tool
with shaft

MSZ 4522/5-83



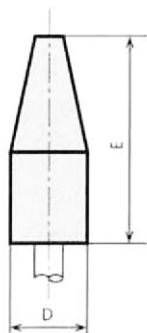
Spherical grinding tool
with shaft

MSZ 4522/6-83

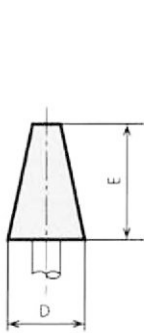


Steel shafts grinding tool
with shaft

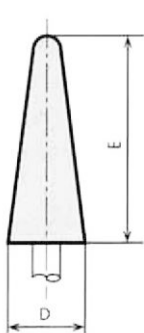
MSZ 4522/1-83



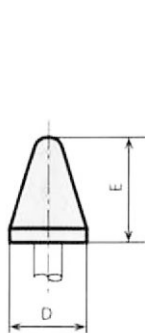
A1



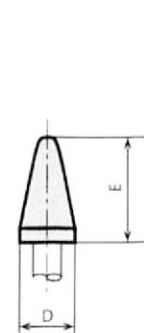
A2



A3



A4



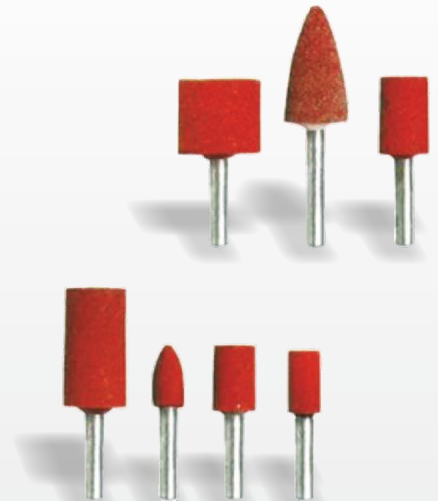
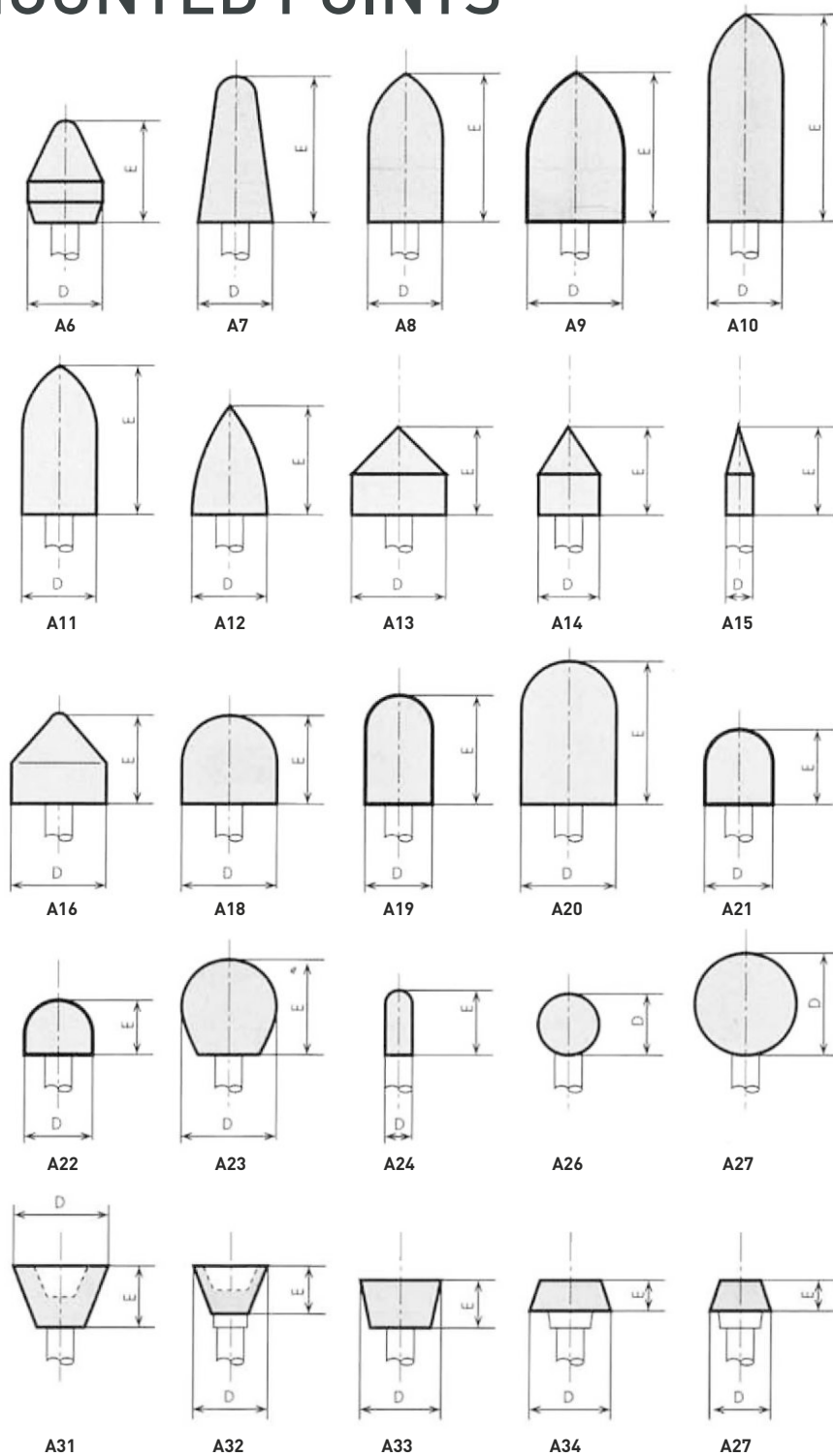
A5



WIDENTA

Member of **MPF** INDUSTRY GROUP

MOUNTED POINTS



WIDENTA

Member of **MPF** INDUSTRY GROUP

Grain type:

Name	Material	Name	Material
1A	Aluminium oxide	1C	Black silicon carbide
6A	White aluminium oxide	2C	Green silicon carbide
7A	Pink aluminium oxide	16A	Mix of 1A and 6A
8A	Red aluminium oxide	12C	Mix of 1C and 2C